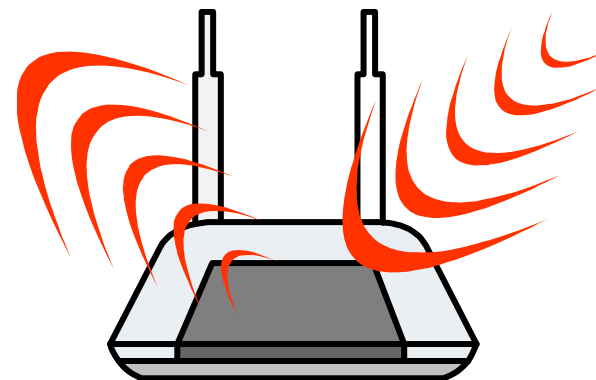


Preventing Wi-Fi Cyber Crimes

Security Setup Steps

Dlink Routers



Dlink – Use WPA or WPA2 Security

1. Click "Home"

2. Click "Wireless"

3. Select "WPA Personal".
If your AP supports it, use "WPA2 Personal"

4. Type your password.
Password should have numbers and special characters (~!@#\$%^&*).

5. Save your changes

DI-624

Home Advanced Tools Status Help

Wireless Settings

These are the wireless settings for the AP (Access Point) Portion.

Wireless Radio : on off

SSID : MyNetwork

Channel : 6 Auto Select

Super G Mode : Disabled

Extended Range Mode : Enabled Disabled

802.11g Only Mode : Enabled Disabled

SSID Broadcast : Enabled Disabled

Security : WPA

Cipher Type : TKIP AES

PSK/EAP : PSK EAP

Passphrase :

Confirmed Passphrase :

* Super G with Dynamic Turbo mode only operates in Channel 6.

Apply Cancel Help

Security Setup for Dlink Wireless Routers

Dlink – Restrict access to your wireless router

1. Click "Tools"

2. Click "Admin"

3. Type administration password. Password should have numbers and special characters (~!@#\$\$%^&*).

4. Disable "Remote Management"

5. Save your changes

Security Setup for Dlink Wireless Routers

Dlink – Enable logging on your wireless router

Logging is always on Dlink routers.

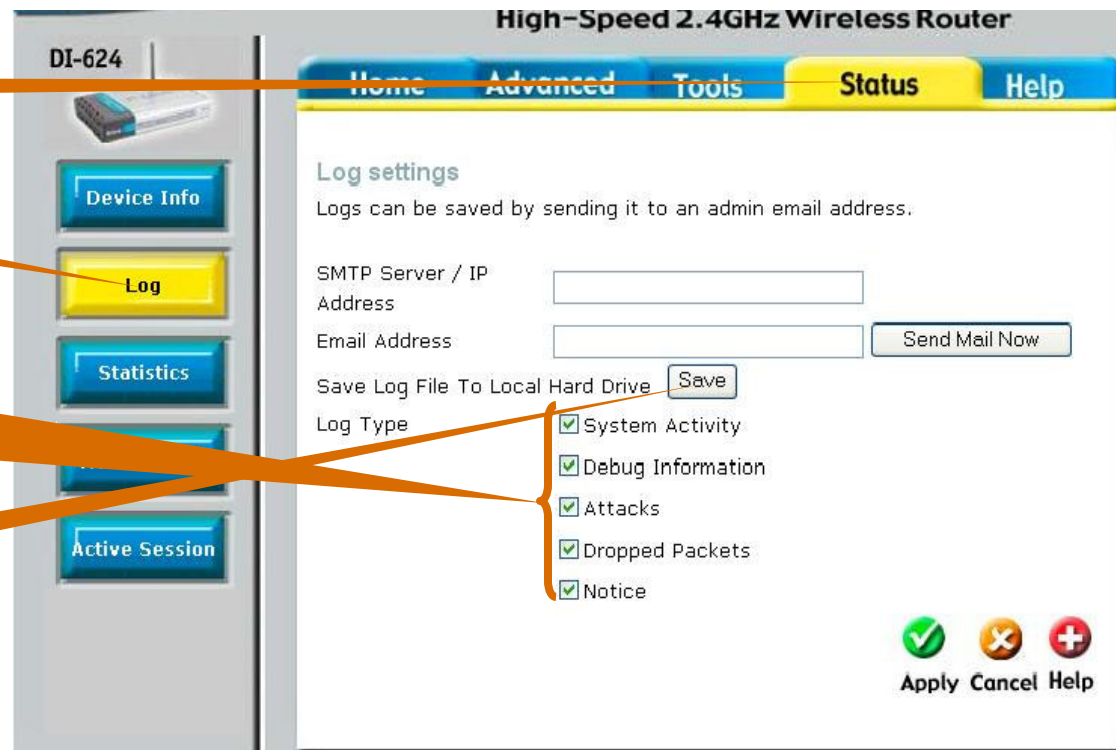
You can access the logs using the steps mentioned below

1. Click "Status"

2. Click "Log"

3. Ensure that all these items are checked when you save the logs.

4. Save logs to your laptop



Security Setup for Dlink Wireless Routers

About AirTight Networks

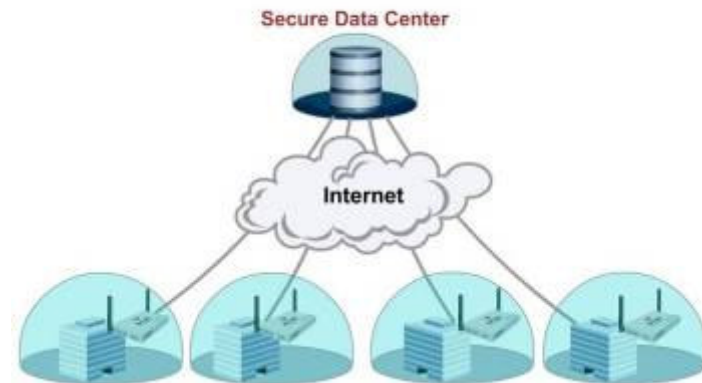
AirTight: We Make Wireless Secure

SpectraGuard Enterprise



- On site appliance and sensors
- CapEx one time investment
- 24x7 WiFi scanning
- Detect and Prevent Attacks

SpectraGuard Online



- Security as a Service
- No upfront investment
- 27x7 WiFi scanning
- Detect & Prevent Attacks

Security Setup for Dlink Wireless Routers

About AirTight Networks



We Make Wireless Secure

www.airtightnetworks.com

To learn more about WiFi security risks and best practices for preventing WiFi attacks, please visit

www.airtightnetworks.com/home/resources/prevent-wifi-attacks.html

www.airtightnetworks.com/home/resources/prevent-wifi-attacks-solutions.html

To learn how AirTight can help secure your wireless network, send mail to:

contact@airtightnetworks.com

Security Setup for Dlink Wireless Routers