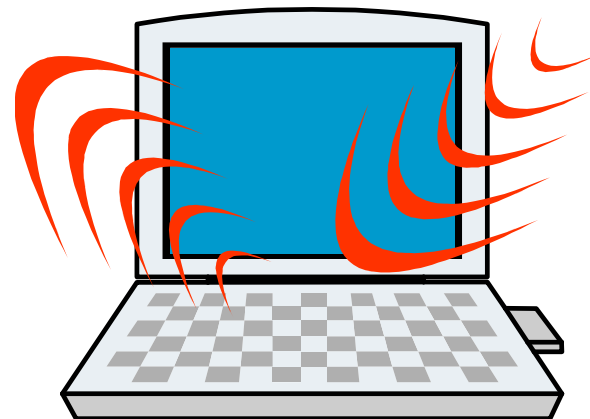


Preventing Wi-Fi Cyber Crimes

Security Setup Steps

Windows XP Computers

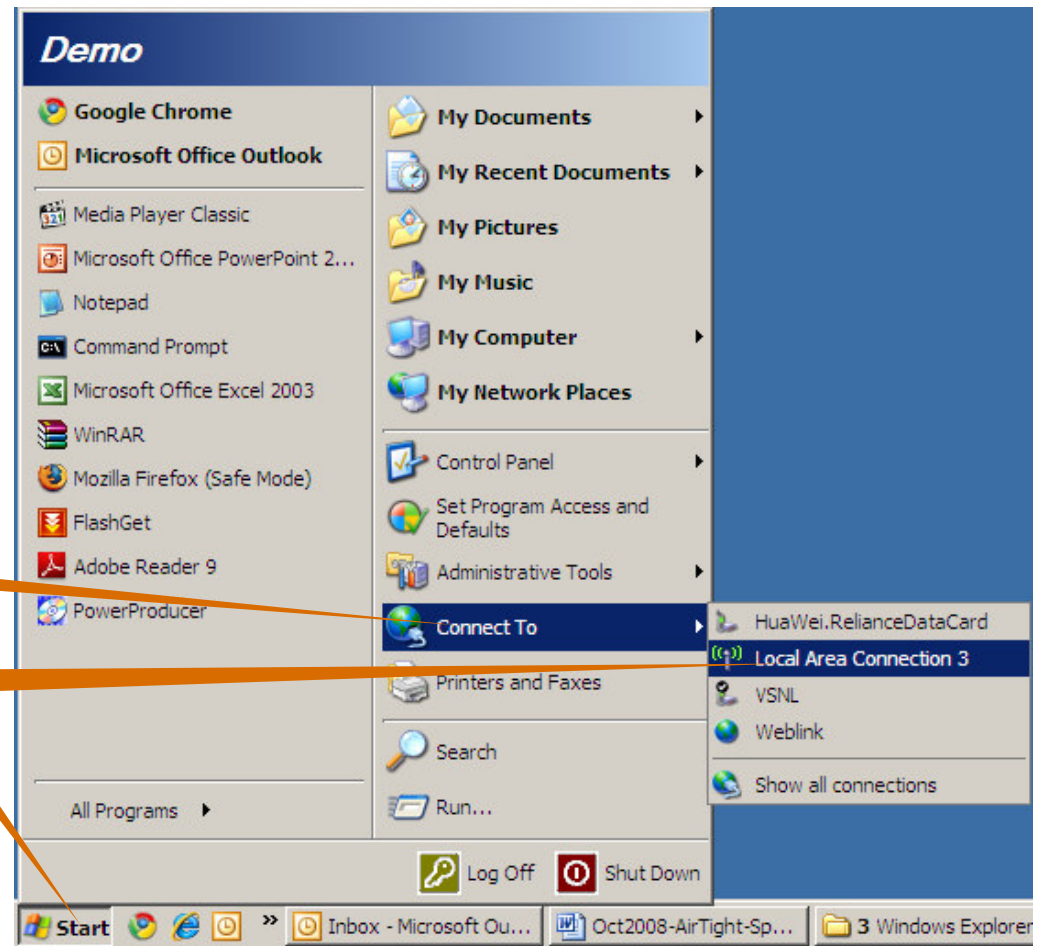


Configure your computer

1. Click "Start"

2. Click "Connect To"

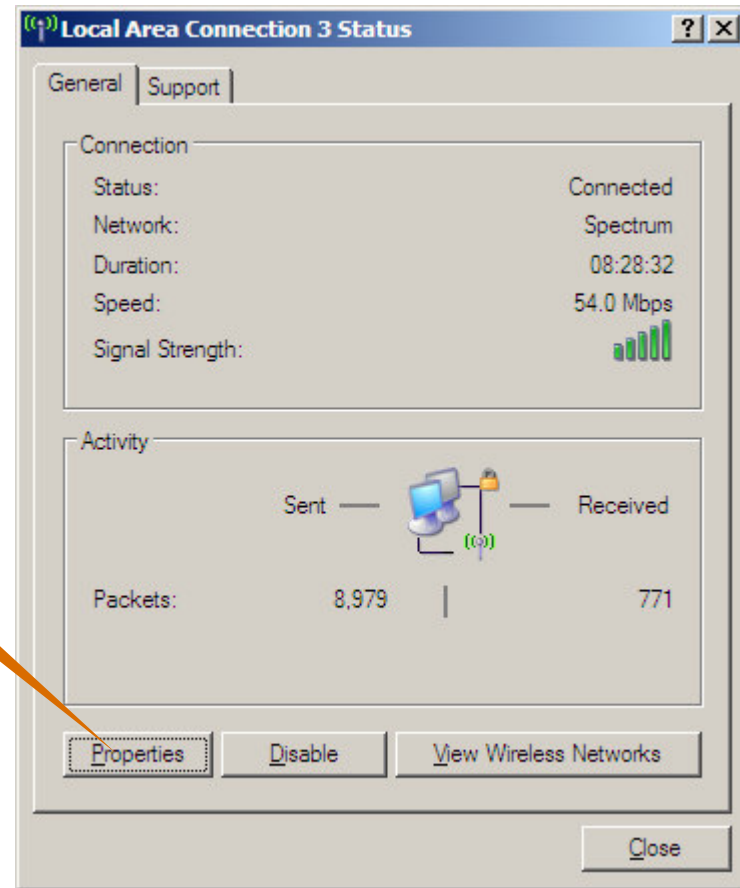
3. Select your wireless interface



Security Setup for Wireless enabled computers

Configure your computer

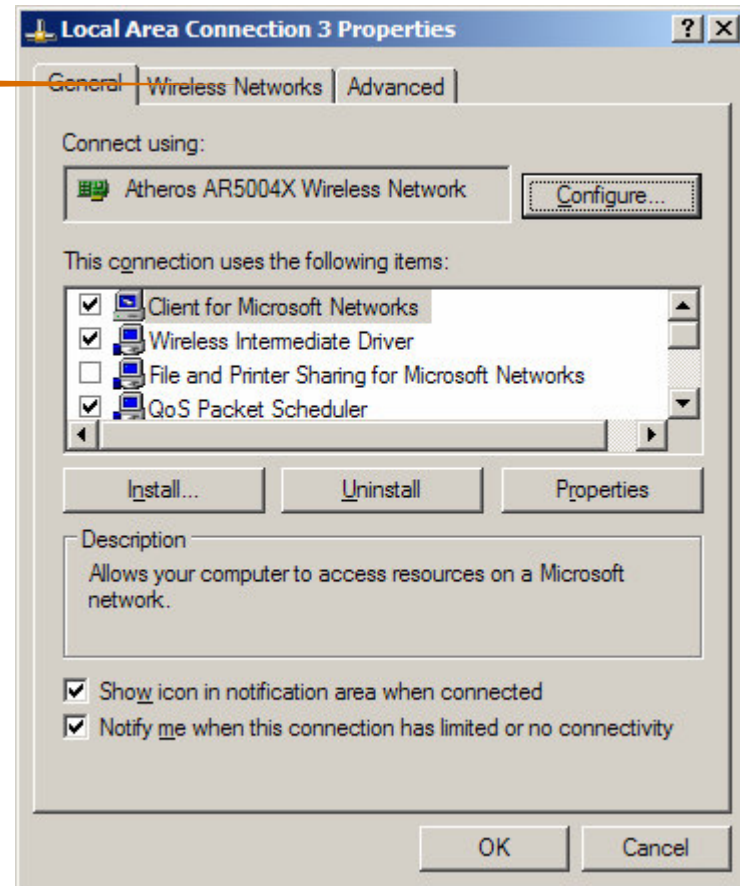
1. Click "Properties"



Security Setup for Wireless enabled computers

Configure your computer

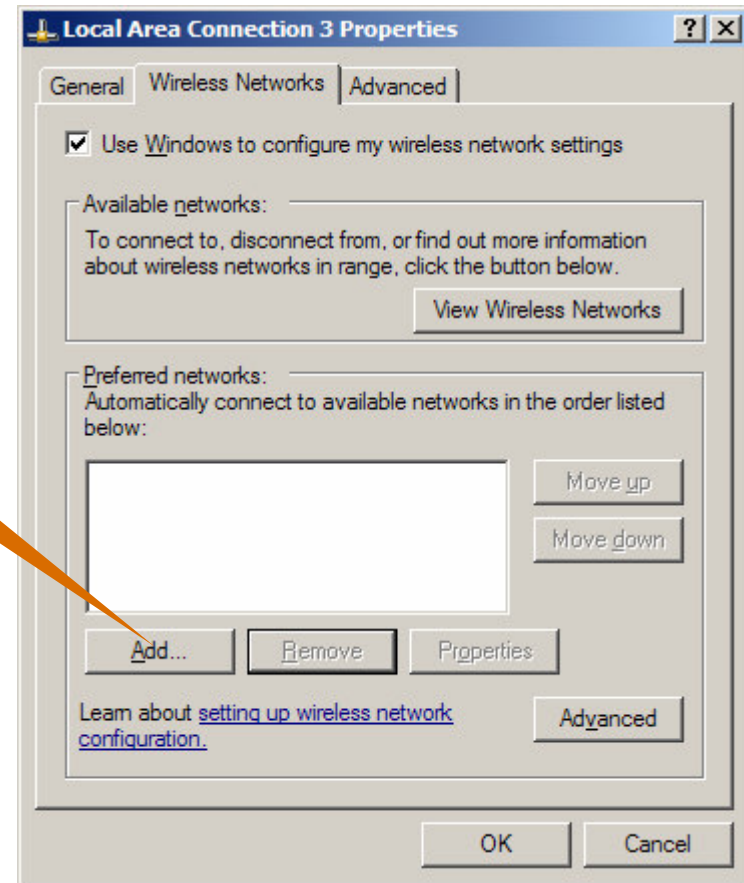
1. Click "Wireless Networks"



Security Setup for Wireless enabled computers

Configure your computer

1. Click "Add"



Security Setup for Wireless enabled computers

Use WPA or WPA2 Security

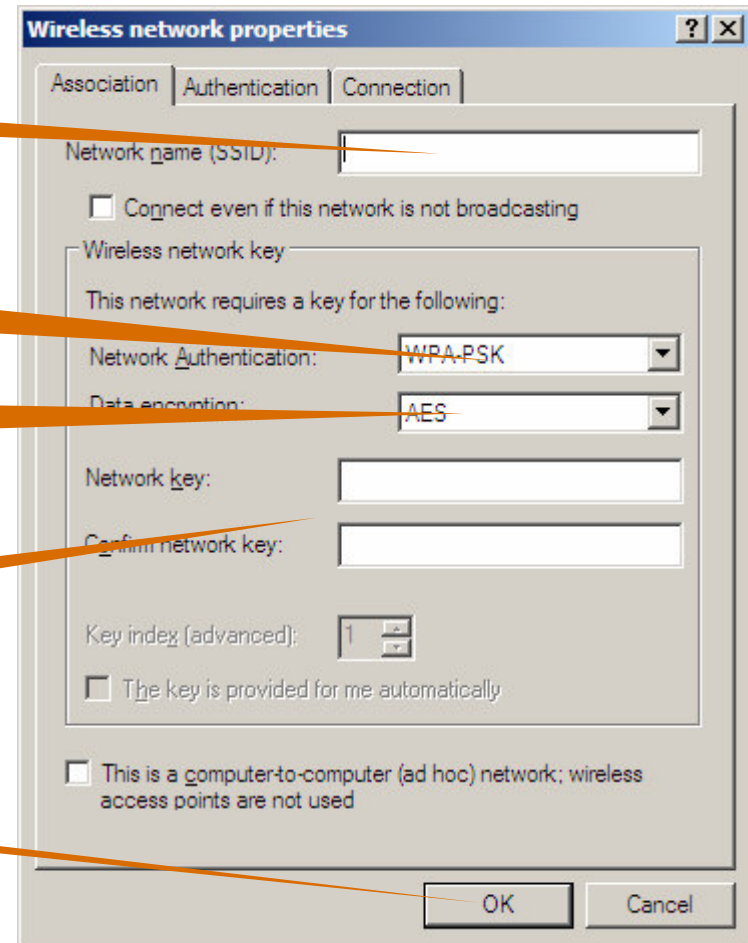
1. Type the SSID as setup in the Wireless router

2. Select the authentication you setup on the wireless router. (WPA-PSK or WPA2-PSK)

3. Select the encryption you selected in the wireless router (AES or TKIP)

4. Type the password (or key) that you used in the wireless router.

5. Save your changes

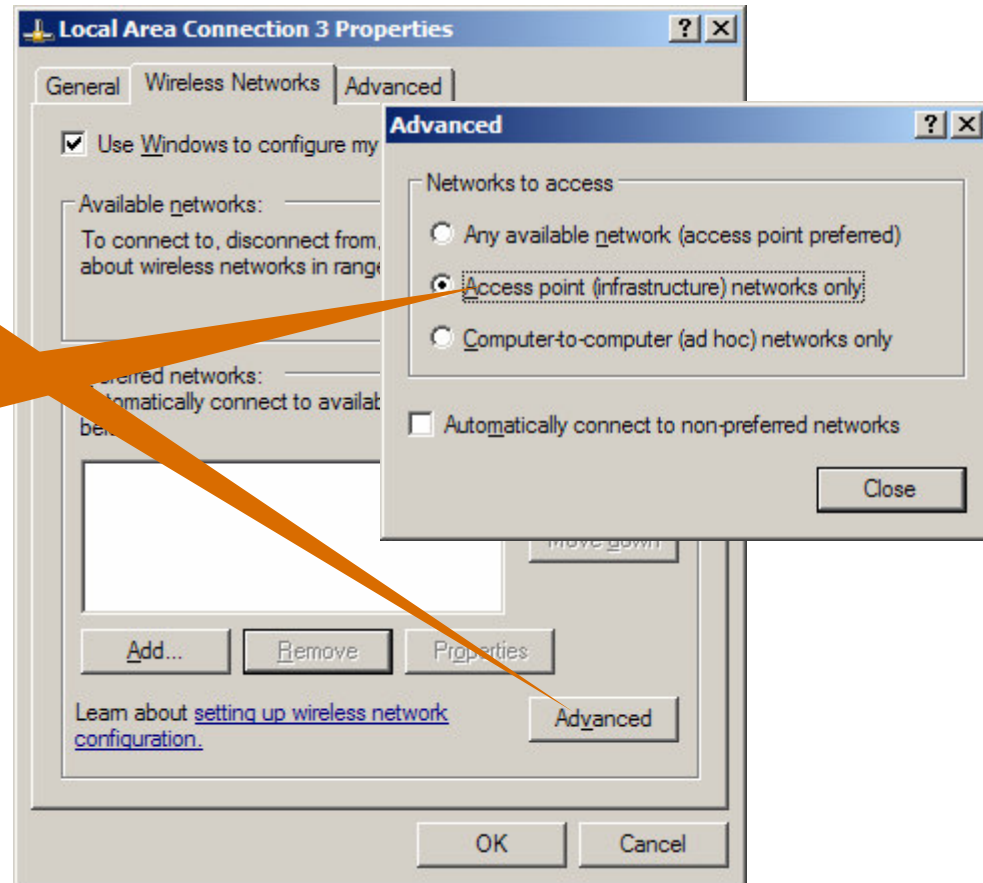


Security Setup for Wireless enabled computers

Disable ad-hoc connections

1. Click "Advanced"

2. Select to use only Access Points. This disables ad-hoc connects from this computer.



Security Setup for Wireless enabled computers

About AirTight Networks

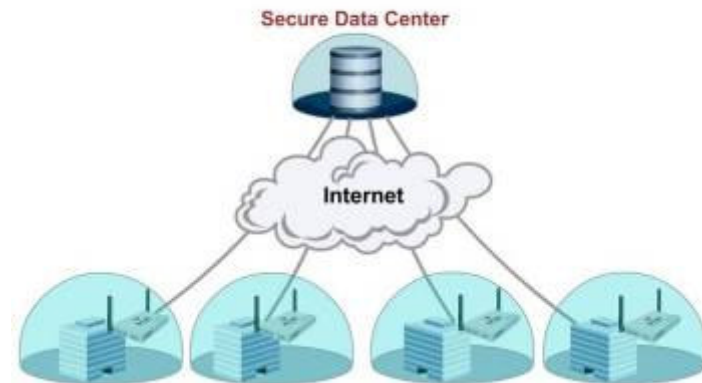
AirTight: We Make Wireless Secure

SpectraGuard Enterprise



- On site appliance and sensors
- CapEx one time investment
- 24x7 WiFi scanning
- Detect and Prevent Attacks

SpectraGuard Online



- Security as a Service
- No upfront investment
- 27x7 WiFi scanning
- Detect & Prevent Attacks

Security Setup for Wireless enabled computers

About AirTight Networks



We Make Wireless Secure

www.airtightnetworks.com

To learn more about WiFi security risks and best practices for preventing WiFi attacks, please visit

www.airtightnetworks.com/home/resources/prevent-wifi-attacks.html

www.airtightnetworks.com/home/resources/prevent-wifi-attacks-solutions.html

To learn how AirTight can help secure your wireless network, send mail to:

contact@airtightnetworks.com

Security Setup for Wireless enabled computers